

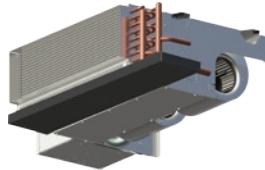
Fan-Coils, VAV Boxes, Blower-Coils, Air Handlers, and Indoor Packaged Equipment

Fan-Coils



HLE Horizontal, Low-Profile, Exposed-Cabinet
200-1200 CFM

HLF Horizontal, Low-Profile, Free-Return
200-1200 CFM



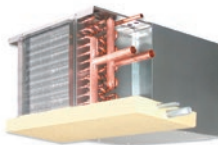
HLP Horizontal, Low-Profile, Plenum-Return
200-1200 CFM

HPE Horizontal, High-Performance, Exposed-Cabinet
600-2000 CFM



HPF Horizontal, High-Performance, Free-Return
600-2000 CFM

HPP Horizontal, High-Performance, Plenum-Return
600-2000 CFM



CDV Vertical, High-Performance
400-2000 CFM

VHE Vertical, Hi-Rise, Exposed-Cabinet
350-1200 CFM



VHA/VHB Vertical, Hi-Rise, Tandem Units
350-1200 CFM

VHC Vertical, Hi-Rise, Concealed-Cabinet
VHM - Master
VHS - Slave
350-1200 CFM



VFE Vertical, Floor, Exposed-Cabinet
250-1200 CFM

VFS Vertical, Floor, Slope-Top
250-1200 CFM



VFC Vertical, Floor, Wall-Mount, Concealed
250-1200 CFM

VLE Low-Height, Vertical, Wall-Mount, Exposed
200-600 CFM



VLC Low-Height, Vertical, Wall-Mount, Concealed
200-600 CFM

Blower-Coil Units



H Horizontal, Belt-Drive
800-4000 CFM

V Vertical, Belt-Drive
800-4000 CFM



VR Vertical, Rear-Return, Reduced-Footprint, Belt-Drive,
800-3000 CFM

VB Vertical, Bottom-Return, Reduced-Footprint, Belt-Drive,
800-3000 CFM



Fan-Coils, VAV Boxes, Blower-Coils, Air Handlers, & Indoor Packaged Equipment

Indoor Packaged Equipment



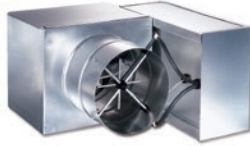
Vertical Stacked
Water Source Heat Pumps
3/4 - 3 Tons

Air-Handling Units



MQL Indoor
Air Handler
1000-8500 CFM

VAV Terminal Units



SDR Single-Duct
100-8000 CFM



VFL Parallel-Flow,
Fan-Powered
Low-Height
100-3000 CFM

SDL Single-Duct
Low-Height
300-4100 CFM

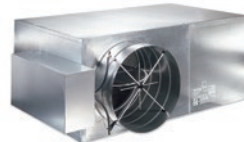


CFL Series-Flow,
Fan-Powered
Low-Height
100-1900 CFM



CFR Series-Flow,
Constant-Volume,
Fan-Powered
100-4800 CFM

VFR Parallel-Flow,
Variable-Volume,
Fan-Powered
100-4100 CFM



CFRQ Series-Flow,
Constant-Volume,
Fan-Powered,
Extra-Outlet
200-3100 CFM